

Amphenol CTF-QUAD

Amphenol Aerospace adds CTF-QUAD to the CTF (Copper to Fiber) Media Converter Product Family. This product line utilizes standard quadrax receptacle connectors and inserts.

The CTF-QUAD product line is fiber to copper and copper to fiber media conversion in quadrax form factor pins for standard D38999 quadrax insert arrangements.

Features & Benefits:

- Quadrax form factor embedded fiber optic transmitters and receivers
- Replace any quadrax pin in receptacle and configure with media conversion copper to fiber and fiber to copper
- Utilizes standard quadrax receptacle connectors and inserts

Fiber Interface:

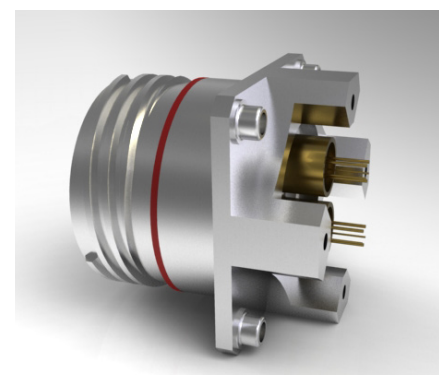
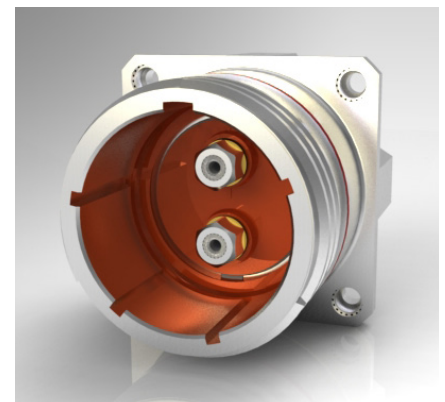
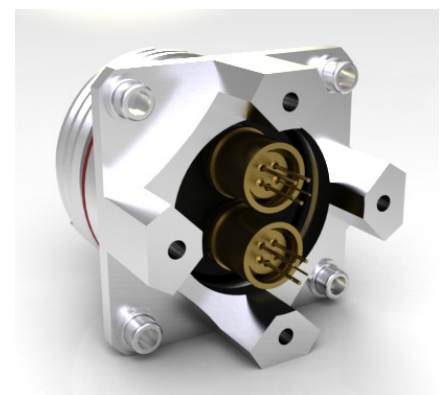
- Industry standard 1.25mm fiber optic ferrules (LC & ARINC-801)
- Plug/socket side utilizes quadrax socket to ARINC-801 pin adapter for system fiber connection

Copper Interface:

- Speed support from DC to 10 Gbps in both transmitter and receiver
- PCB lead connection to customer circuit board or PCB lead connection to flex with nano

Ruggedization:

- Industry standard rugged transmitters and receivers -40°C to +85°C
- Components epoxy sealed in place



Contact Jared Sibrava for more information at jsibrava@amphenol-aa.com or call 607-563-5372

Amphenol CTF-QUAD

How to Order

CTF-QUAD Receptacle

Ordering procedure is shown below using part number CTF5Q90A1-04TN

1.	2.	3.	4.	5.	6.	7.	8.	9.
Connector Type	Material	Quadrax Contact	Finish	Shell Style	Shell Size-Insert Arrangement	Mode	Device Type	Rotation
CTF	5	Q	Z	0	A1	04	T	N

Step 1. Connector Type

	Designates
CTF	Copper to Fiber Product Family

Step 2. Select a Material

	Designates
5	Aluminum Shell
6	Composite Shell
8	Stainless Steel Shell

Step 3. Quadrax Contact

	Designates
Q	Quadrax Size 8 Contact Active Device

Step 4. Select a Finish

	Designates
T	Aluminum Durmalon
Z	Aluminum Black Zinc Nickel
F	Aluminum Electroless Nickel
M	Composite Electroless Nickel
W	Aluminum OD Cad
J	Composite OD Cad
L	Stainless Steel Electrodeposited Nickel
Y	Stainless Steel Passivated*

*environmental only-not hermetic
Note: There is not a Mil-Spec finish for environmental passivated steel-only hermetic, hence the asterisk.

Step 5. Select a Shell Style

	Designates
0	Wall Mount
N	Wall Mount w/ Clinch Nuts
7	Jam Nut

Note: All with Stand-off

Step 6. Select a Shell Size-Insert Arrangement

	Designates
A1	9-5
E2	17-52
F4	21-75
H6	23-6
J8	25-8

Step 7. Select a Mode

	Designates
04	4 Gb/s multimode
08	8 Gb/s multimode
10	10 Gb/s multimode

Step 8. Device Type

	Designates
T	Transmit
R	Receive
X	Transceiver

Step 9. Select a Rotation

	Designates
N	Normal
A	
B	
C	
D	
E	

CTF-QUAD Mating Plug

Ordering procedure is shown below using part number CTF5P96A1-000N (kit w/ connector and appropriate number of A801 cavity adapters)

1.	2.	3.	4.	5.	6.	7.
Connector Type	Material	Quadrax Contact	Finish	Shell Style	Shell Size-Insert Arrangement	Rotation
CTF	5	P	Z	6	A1	000 N

Step 1. Connector Type

	Designates
CTF	Copper to Fiber Product Family

Step 2. Select a Material

	Designates
5	Aluminum Shell
6	Composite Shell
8	Stainless Steel Shell

Step 3. Quadrax Contact

	Designates
P	Quadrax Size 8 Contact Adapter for ARINC 801 Contact

Step 4. Select a Finish

Note: See Finish Key above

Step 5. Select a Shell Style

	Designates
6	Straight Plug

Note: No Stand-off, accessory threads

Step 6. Select a Shell Size-Insert Arrangement

	Designates
A1	9-5
E2	17-52
F4	21-75
H6	23-6
J8	25-8

Step 7. Select a Rotation

Note: See Rotation Key above